



Government of India
Ministry of Earth Sciences
India Meteorological Department



Press Release

Date: 30th March, 2025

Time of Issue: 1400 hours IST

Subject: i. **Light to moderate rainfall accompanied by thunderstorm and lightning, gusty wind (40-60 kmph) and hailstorm activity likely during 31st March-03rd April over Maharashtra, Karnataka and Kerala & Mahe and interior Tamil Nadu**
ii. **Isolated heavy rainfall over Karnataka and Kerala & Mahe and interior parts of Tamil Nadu during 02nd & 03rd April.**
iii. **Maximum temperature is likely to increase over northwest India by 5-7°C from 30th March to 02nd April.**

i. Realised weather during past 24 hours till 0830 hours IST of today, the 30th March 2025 (Annexure I):

- ❖ **Squally/Gusty winds** prevailed at isolated locations over Punjab, Haryana, Uttar Pradesh, Assam.
- ❖ **Heat wave** observed at isolated places over Gangetic West Bengal.
- ❖ **For more details of realised weather, kindly refer Annexure I**

Temperature:

- ❖ Temperature observations during past 24 hours till 0830 hours IST of today are provided in **Annexure II.**

ii. Weather Systems, Forecast and Warnings (Annexure III & IV):

- ❖ Under the influence of trough and wind confluence over Central and adjoining parts of Maharashtra in lower tropospheric levels:
 - ✓ **Isolated to scattered** light/moderate rainfall accompanied with **thunderstorm, lightning & gusty winds (speed 30-60 kmph)** likely over West Madhya Pradesh, Chhattisgarh during 01st-03rd April; Vidarbha on 01st April; East Madhya Pradesh on 2nd & 03rd April; Maharashtra state during 31st March to 03rd April; Gujarat State during 31st March to 03rd April; Kerala & Mahe, Coastal Andhra Pradesh & Yanam, Rayalaseema, Telangana, Karnataka during 01st-03rd April.
 - ✓ **Isolated to scattered** light/moderate rainfall accompanied with **hailstorm** likely over Madhya Maharashtra, Marathwada on 01st & 2nd; Coastal Karnataka on 02nd and 03rd; North Interior Karnataka on 02nd & 03rd; South Interior Karnataka on 03rd April.
 - ✓ **Heavy rainfall** very likely at isolated places over Tamilnadu Puducherry & Karaikal, Coastal Karnataka, South Interior Karnataka on 02nd & 03rd; Kerala & Mahe during 02nd-05th; North Interior Karnataka on 03rd April.
- ❖ An upper air cyclonic circulation lies over Nagaland & neighbourhood in lower tropospheric levels. Under its influence:
 - ✓ **Scattered to fairly widespread** light/moderate rainfall accompanied with **thunderstorm, lightning & gusty winds (speed 40-50 kmph)** likely over Arunachal Pradesh on 30th & 31st; Tripura on 31st March.

Temperature Forecast:

- ❖ No significant change in maximum temperatures over Western Himalayan region, central, east & northeast India, south peninsular and Maharashtra during 30th March-03rd April.
- ❖ Gradual rise in maximum temperatures by 5-7°C likely over northwest India during 30th March-03rd April.
- ❖ Gradual rise in maximum temperatures by 2-3°C likely over Gujarat during 30th March-01 April.
- ❖ Gradual rise in maximum temperatures by 2-3°C likely over Bihar during 30th March- 01st April and no significant change thereafter till 3 April.

Heat wave and Hot & Humid weather warning:

- ❖ Heat wave conditions very likely at isolated pockets of Gangetic West Bengal on 30th; Saurashtra & Kutch on 30th & 31st March.
- ❖ Hot & humid weather conditions very likely to prevail at isolated pockets of Assam during 30th March -01st April; Tripura during 30th March- 03rd April; Tamilnadu Puducherry & Karaikal, Coastal Andhra Pradesh & Yanam, Kerala & Mahe on 30th & 31st March.

iv. Weather conditions and forecast over Delhi/NCR during 30th March to 02nd April. 2025 (Annexure V)

For more details, kindly refer National Weather Bulletin:

https://mausam.imd.gov.in/responsive/all_india_forecast_bulletin.php

For District wise warnings refer: <https://mausam.imd.gov.in/responsive/districtWiseWarningGIS.php>

ANNEXURE I

Significant weather reported during past 24 hours till 0830 hours IST of today:

- ❖ **Light/moderate Rainfall** observed at many places over Arunachal Pradesh; at isolated places over Sub-Himalayan West Bengal & Sikkim, Assam & Meghalaya, Tamilnadu Puducherry & Karaikal, Interior Karnataka.

Rainfall recorded (in cm):

- ❖ **Arunachal Pradesh:** Hayuliang_circle (dist Anjaw) 4, Kaying AWS (dist West Siang) 2.

ANNEXURE II

Temperature observations during past 24 hours till 0830 hours IST of today:

- ❖ Yesterday, Maximum Temperatures fallen by 2-5°C over many parts of Delhi, Uttar Pradesh, Bihar, Jharkhand, Gangetic West Bengal, north Rajasthan, East Madhya Pradesh, Chhattisgarh; risen by 3-5°C over Jammu, by 1-3°C Himachal Pradesh, West Rajasthan, Gujarat State, Konkan & Goa, Tamilnadu, Coastal Andhra Pradesh & Yanam and no significant change over rest parts of the country.
- ❖ Yesterday, Maximum Temperatures were in the range of 38-42°C at many places over Vidarbha, Madhya Maharashtra, Odisha; at a few places over Saurashtra & Kutch, Gangetic West Bengal, Telangana, Rayalaseema, Coastal Karnataka, Tamil Nadu, Puducherry & Karaikal, Coastal Andhra Pradesh & Yanam; at isolated places over Chhattisgarh; 35-38°C at many places over Bihar, East Uttar Pradesh, Madhya Pradesh, Kerala; at a few places over Jharkhand, Tripura, Interior Karnataka, Gujarat Region; 28-35°C at many places over Haryana-Chandigarh-Delhi, Rajasthan, West Uttar Pradesh, Konkan & Goa; at a few places over Himachal Pradesh, Nagaland, Manipur, Sub-Himalayan West Bengal & Sikkim, Assam & Meghalaya. Yesterday, the highest maximum temperature of 42.0°C was reported at Rajnandgaon (Chhattisgarh), Chandrapur (Vidarbha) & Sambalpur (Odisha) over the country. **(Fig.1)**
- ❖ Maximum Temperatures were **appreciably above normal (3.1°C to 5.0°C)** at isolated places over Odisha, Coastal Andhra Pradesh & Yanam, Saurashtra & Kutch, Nagaland, Manipur, Mizoram & Tripura, Himachal Pradesh; **above normal (1.6°C to 3.0°C)** at many places over Gangetic West Bengal, Vidarbha; at a few places over Jammu-Kashmir-Ladakh-Gilgit-Baltistan-Muzaffarabad, Tamil Nadu, Puducherry & Karaikal, Kerala & Mahe; at isolated places over Rayalaseema, Bihar, Konkan & Goa, Sub-Himalayan West Bengal & Sikkim. These were **appreciably below normal (-3.1°C to -5.0°C)** at isolated places over West Rajasthan; **below normal (-3.0°C to -1.6°C)** at a few places over East Rajasthan, Madhya Pradesh; at isolated places over Punjab, Haryana-Chandigarh-Delhi, West Uttar Pradesh, Gujarat Region and near normal over rest parts of the country **(Fig. 2).**

Fig. 1: Maximum Temperatures

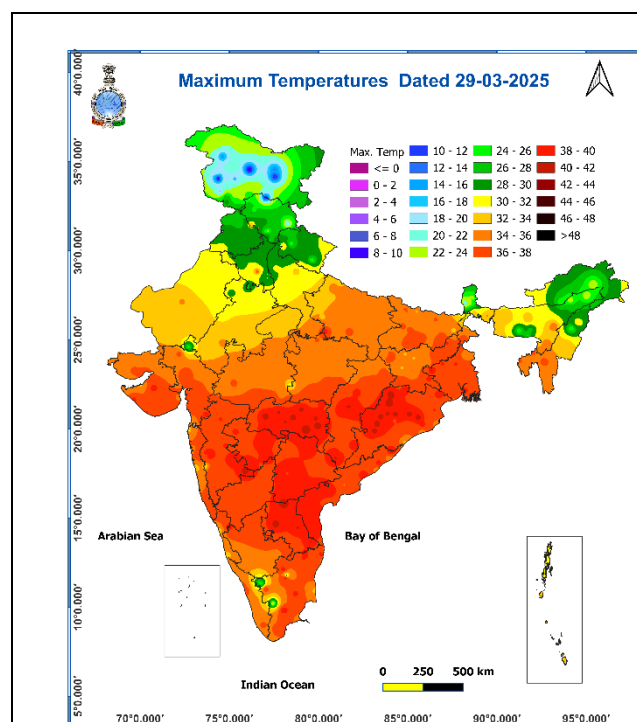
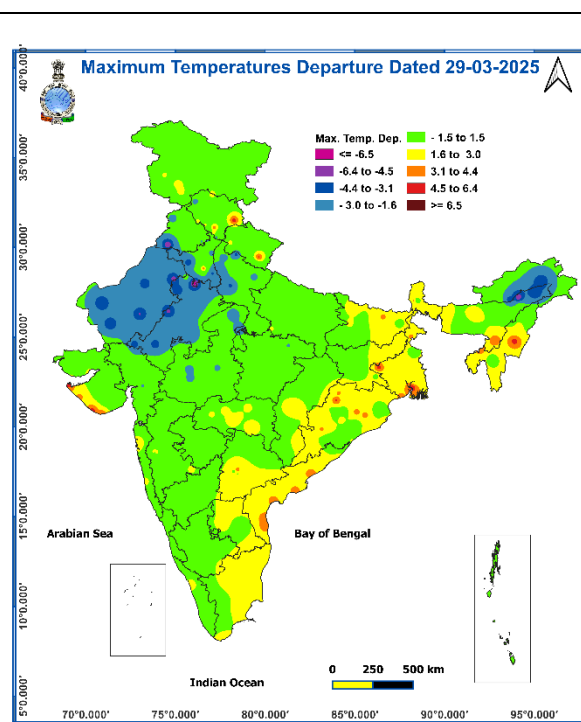


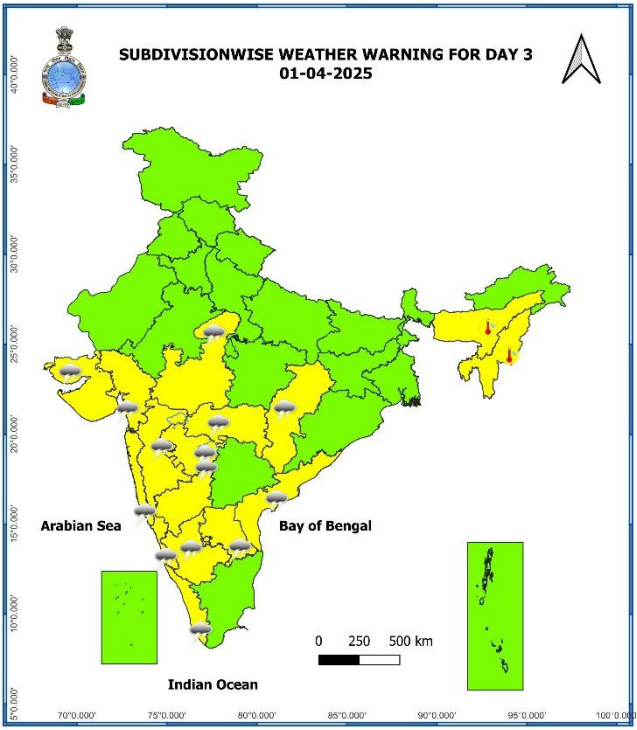
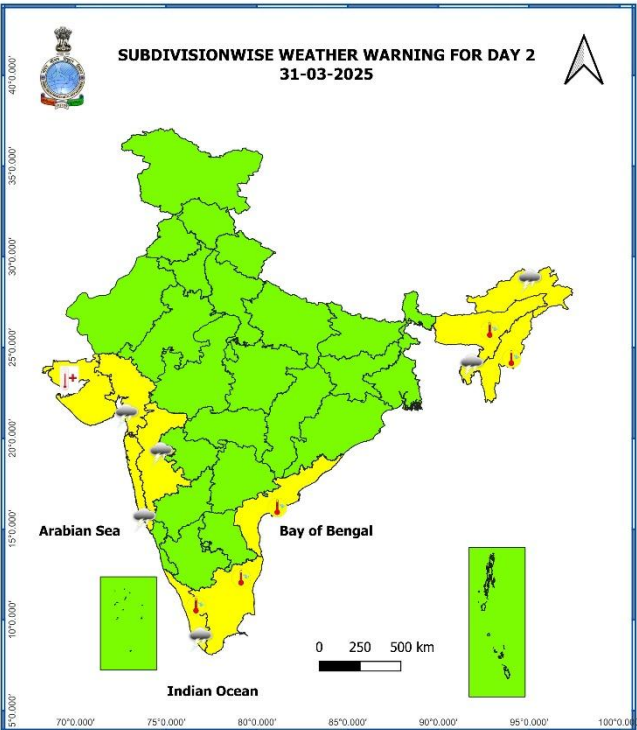
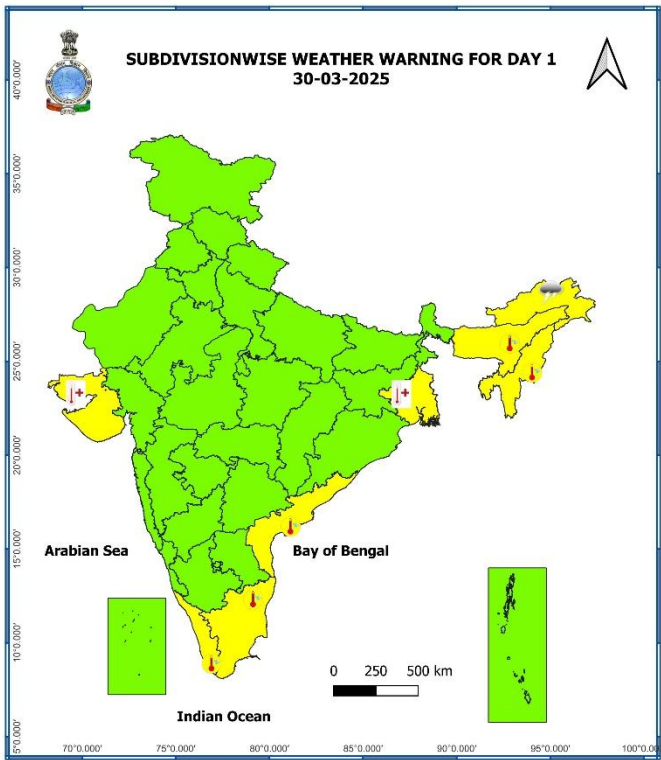
Fig. 2: Departure of Maximum Temperatures

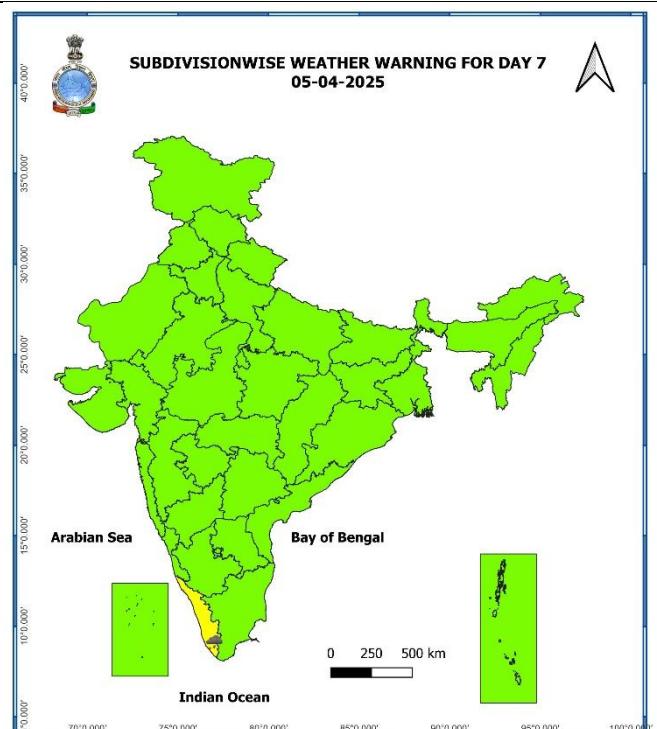
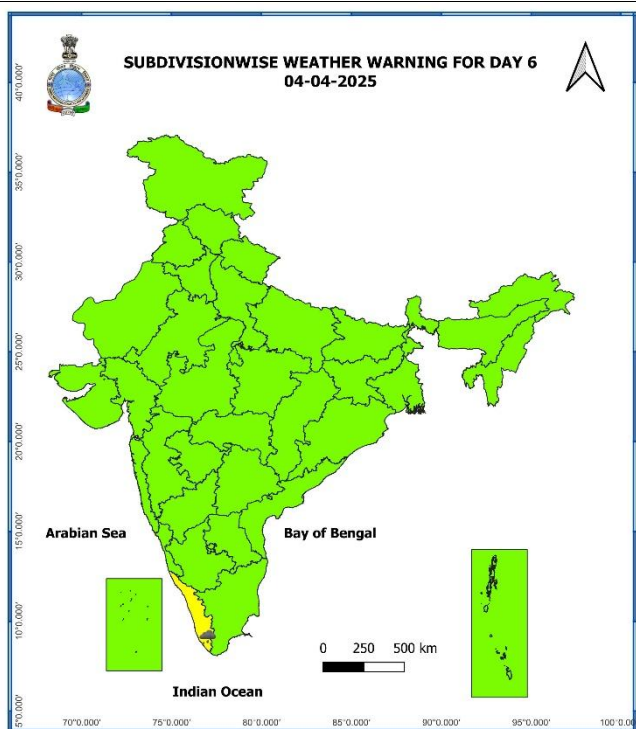
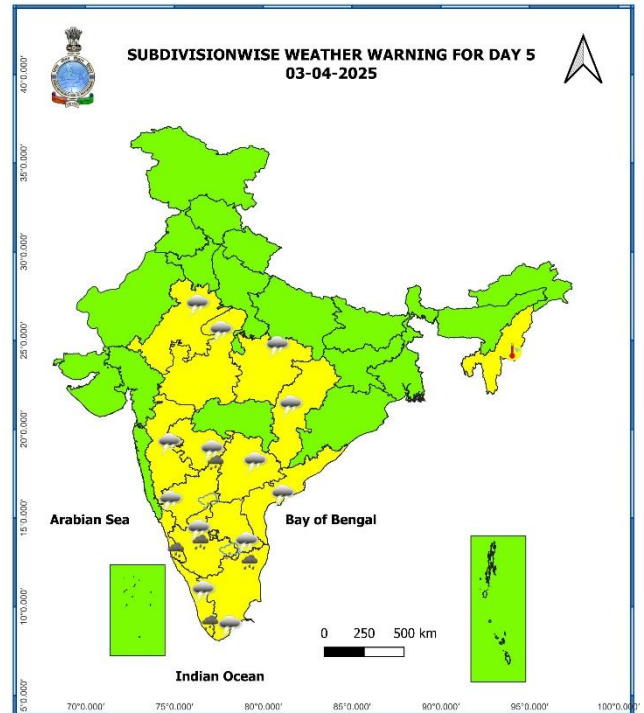
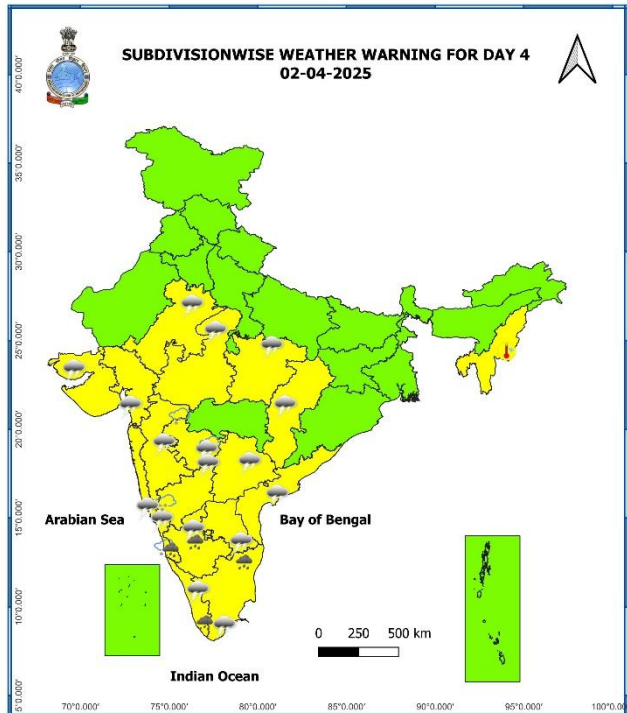


ANNEXURE III

7 Days Rainfall Forecast								
S. No.	Subdivision	30-Mar	31-Mar	01-Apr	02-Apr	03-Apr	04-Apr	05-Apr
		Day 1	Day 2	Day 3	Day 4	Day 5	Day 6	Day 7
1	ANDAMAN & NICOBAR ISLANDS	ISOL	ISOL	SCT	FWS	WS	WS	FWS
2	ARUNACHAL PRADESH	SCT	ISOL	ISOL	ISOL	SCT	FWS	FWS
3	ASSAM & MEGHALAYA	ISOL	DRY	DRY	DRY	ISOL	SCT	SCT
4	NAGALAND, MANIPUR, MIZORAM & TRIPURA	DRY	ISOL	ISOL	DRY	ISOL	ISOL	SCT
5	SUB-HIMALAYAN WEST BENGAL & SIKKIM	ISOL	ISOL	DRY	DRY	DRY	DRY	DRY
6	GANGETIC WEST BENGAL	DRY	DRY	DRY	DRY	DRY	ISOL	ISOL
7	ODISHA	DRY	DRY	DRY	ISOL	ISOL	ISOL	ISOL
8	JHARKHAND	DRY	DRY	DRY	ISOL	ISOL	DRY	DRY
9	BIHAR	DRY	DRY	DRY	DRY	DRY	DRY	DRY
10	EAST UTTAR PRADESH	DRY	DRY	DRY	DRY	DRY	DRY	DRY
11	WEST UTTAR PRADESH	DRY	DRY	DRY	DRY	DRY	DRY	DRY
12	UTTARAKHAND	DRY	DRY	DRY	DRY	ISOL	DRY	DRY
13	HARYANA CHANDIGARH & DELHI	DRY	DRY	DRY	DRY	DRY	DRY	DRY
14	PUNJAB	DRY	DRY	DRY	DRY	DRY	DRY	DRY
15	HIMACHAL PRADESH	DRY	DRY	DRY	DRY	ISOL	DRY	DRY
16	JAMMU & KASHMIR AND LADAKH	DRY	DRY	DRY	DRY	DRY	DRY	DRY
17	WEST RAJASTHAN	DRY	DRY	DRY	DRY	DRY	DRY	DRY
18	EAST RAJASTHAN	DRY	DRY	DRY	ISOL	ISOL	DRY	DRY
19	WEST MADHYA PRADESH	DRY	DRY	DRY	ISOL	ISOL	DRY	DRY
20	EAST MADHYA PRADESH	DRY	DRY	DRY	ISOL	ISOL	DRY	DRY
21	GUJARAT REGION	DRY	ISOL	ISOL	ISOL	ISOL	DRY	DRY
22	SAURASHTRA & KUTCH	DRY	DRY	ISOL	ISOL	DRY	DRY	DRY
23	KONKAN & GOA	DRY	ISOL	ISOL	ISOL	ISOL	ISOL	ISOL
24	MADHYA MAHARASHTRA	ISOL	ISOL	SCT	SCT	ISOL	ISOL	ISOL
25	MARATHAWADA	ISOL	ISOL	SCT	SCT	ISOL	ISOL	ISOL
26	VIDARBHA	DRY	DRY	ISOL	ISOL	ISOL	ISOL	DRY
27	CHHATTISGARH	DRY	DRY	ISOL	ISOL	ISOL	ISOL	ISOL
28	COASTAL ANDHRA PRADESH & YANAM	ISOL	ISOL	ISOL	ISOL	SCT	SCT	ISOL
29	TELANGANA	DRY	DRY	DRY	ISOL	SCT	SCT	SCT
30	RAYALASEEMA	DRY	DRY	ISOL	ISOL	SCT	SCT	ISOL
31	TAMILNADU PUDUCHERRY & KARAIKAL	DRY	ISOL	ISOL	SCT	SCT	SCT	ISOL
32	COASTAL KARNATAKA	ISOL	ISOL	ISOL	FWS	WS	WS	SCT
33	NORTH INTERIOR KARNATAKA	ISOL	ISOL	ISOL	ISOL	SCT	SCT	SCT
34	SOUTH INTERIOR KARNATAKA	ISOL	ISOL	ISOL	SCT	WS	FWS	SCT
35	KERALA & MAHE	ISOL	ISOL	SCT	SCT	FWS	WS	WS
36	LAKSHADWEEP	DRY	DRY	DRY	DRY	DRY	DRY	DRY

- As the lead period increases forecast accuracy decreases.





- Action may be taken based on **ORANGE AND RED COLOUR** warnings.
- Vulnerable regions likely urban and hilly areas action may be initiated for heavy rainfall warning.
- As the lead period increases forecast accuracy decreases.

Detailed district wise Multi Hazard weather warning for next five days available at
<https://mausam.imd.gov.in/responsive/districtWiseWarningGIS.php>

Weather forecast over Delhi/NCR during 30th Mar. to 02nd Apr. 2025**Past Weather:**

There has been rise in minimum temperature upto 01°C and fall in maximum temperature upto 03°C over Delhi/NCR during the past 24 hours. The maximum and minimum temperatures over Delhi are in the range of 39 to 30°C and 14 to 16°C respectively. The minimum and maximum temperatures were below normal upto 04°C at most places. Mainly clear sky conditions with predominant surface wind from the northwest direction with wind speeds less than 16 to 20 kmph occasionally gusty wind upto 40 kmph prevailed during the past 24 hours. Mainly clear sky conditions with wind speed less than 20 kmph from the northwest direction prevailed over the region in the forenoon today.

Weather Forecast:

30.03.2025: Party cloudy sky. The maximum temperature over Delhi is likely to be in the range of 31 to 33°C. The predominant surface wind will likely be from the west-northwest direction with a wind speed of less than 20 kmph till evening. It would decrease thereafter becoming less than 12 kmph from the northwest direction during the night.

31.03.2025: Mainly clear sky. The maximum and minimum temperatures over Delhi are likely to be in the range of 32 to 34°C and 17 to 19°C respectively. The predominant surface wind will likely be from the northwest direction with a wind speed of 08-10 kmph during morning hours. The wind speed will gradually increase thereafter becoming 14-16 kmph from the west-northwest direction during the afternoon. It will decrease becoming less than 10 kmph from the northwest direction during evening and night.

01.04.2025: Mainly clear sky. The maximum and minimum temperatures over Delhi are likely to be in the range of 33 to 35°C and 18 to 20°C respectively. The predominant surface wind will likely be from the northwest direction with a wind speed of 08-10 kmph during morning hours. The wind speed will gradually increase becoming 14-16 kmph from the northwest direction in the afternoon. It will decrease becoming less than 08 kmph from the north direction during evening and night.

02.04.2025: Mainly clear sky. The maximum and minimum temperatures over Delhi are likely to be in the range of 34 to 36°C and 18 to 20°C respectively. The predominant surface wind will likely be from the northeast direction with a wind speed of 06-08 kmph during morning hours. The wind speed will gradually increase becoming 08-10 kmph from the northwest direction in the afternoon. It will decrease becoming less than 06 kmph from the northeast direction during evening and night.

Impact expected and action suggested due Heat Wave conditions over Gangetic West Bengal on 30th & Saurashtra & Kutch on 30th & 31st March.

Orange alert Areas

- High temperature & increased likelihood of heat illness symptoms in people who are either exposed to sun for a prolonged period or doing heavy work.
- High health concern for vulnerable people e.g. infants, elderly, people with chronic diseases.
- Avoid heat exposure– keep cool. Avoid dehydration.
- Drink sufficient water- even if not thirsty.
- Use ORS, homemade drinks like lassi, torani (rice water), lemon water, buttermilk, etc. to keep yourself hydrated.

Yellow alert Areas

- Moderate temperature & heat is tolerable for general public but moderate health concern likely for vulnerable people e.g. infants, elderly, people with chronic diseases.
- Avoid heat exposure.
- Wear lightweight, light colour, loose, cotton clothes.
- Cover your head, use a cloth, hat or umbrella.

Impact expected and action suggested due to isolated thunderstorm with lightning/gusty winds & Hailstorm over central & south Peninsular India during 31st March-02nd April.

Impact expected:

- Strong wind/hail may damage plantation, horticulture and standing crops.
- Hail may injure people and cattle at open places.
- Partial damage to vulnerable structures due to strong winds.
- Minor damage to kutcha houses/walls and huts.
- Loose objects may fly.

Action suggested:

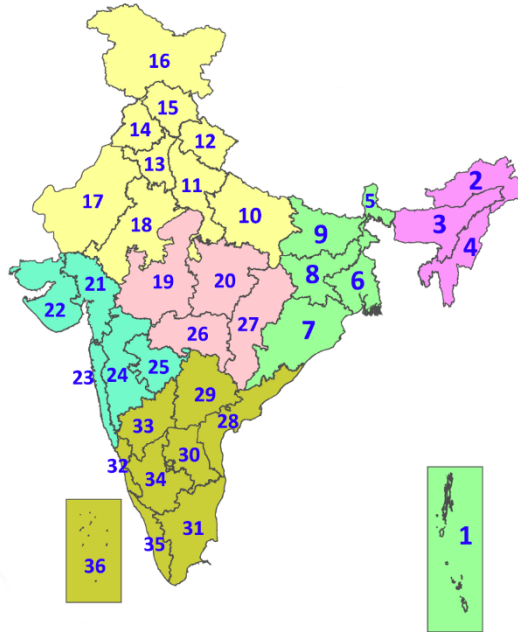
- Stay indoors, close windows & doors and avoid travel if possible.
- Take safe shelters; do not take shelter under trees.
- Do not lie on concrete floors and do not lean against concrete walls.
- Unplug electrical/ electronic appliances.
- Immediately get out of water bodies.
- Keep away from all the objects that conduct electricity.

Legends & abbreviations:

- ❖ **Heavy Rain:**64.5-115.5mm; **Very Heavy Rain:**115.6-204.4mm; **Extremely Heavy Rain:** >204.4mm.
- ❖ **Obsy:** Observatory; **AWS:** Automatic Weather Station; **ARG:** Automatic Rain Gauge; **dist:** District; **NH:** National Highway; **KVK:** Krishi Vigyan Kendra; **DVC:** Damodar Valley Corporation; **PTO:** Part Time Office, **Aero:** Aerodrome, **IAF:** Indian Air Force.
- ❖ **Region wise classification of meteorological Sub-Divisions:**
 - **Northwest India:** Western Himalayan Region (Jammu-Kashmir-Ladakh-Gilgit-Baltistan-Muzaffarabad, Himachal Pradesh and Uttarakhand); Punjab, Haryana-Chandigarh-Delhi; West Uttar Pradesh, East Uttar Pradesh, West Rajasthan and East Rajasthan.
 - **Central India:** West Madhya Pradesh, East Madhya Pradesh, Vidarbha and Chhattisgarh.
 - **East India:** Bihar, Jharkhand, Sub-Himalayan West Bengal & Sikkim; Gangetic West Bengal, Odisha and Andaman & Nicobar Islands.
 - **Northeast India:** Arunachal Pradesh, Assam & Meghalaya and Nagaland, Manipur, Mizoram & Tripura.
 - **West India:** Gujarat Region, Saurashtra & Kutch, Konkan & Goa, Madhya Maharashtra and Marathawada.
 - **South India:** Coastal Andhra Pradesh & Yanam, Telangana, Rayalaseema, Coastal Karnataka, North Interior Karnataka, South Interior Karnataka, Kerala & Mahe, Tamil Nadu, Puducherry & Karaikal and Lakshadweep.

LEGENDS

1. अंडमान और निकोबार द्वीपसमूह
2. अरुणाचल प्रदेश
3. असम और मेघालय
4. नागालैंड, मणिपुर, मिजोरम और त्रिपुरा
5. उप-हिमालयी पश्चिम बंगाल और सिक्किम
6. गंगीय पश्चिम बंगाल
7. ओडिशा
8. झारखंड
9. बिहार
10. पूर्वी उत्तर प्रदेश
11. पश्चिम उत्तर प्रदेश
12. उत्तराखंड
13. हरियाणा, चंडीगढ़ और दिल्ली
14. पंजाब
15. हिमाचल प्रदेश
16. जम्मू और कश्मीर और लद्दाख
17. पश्चिम राजस्थान
18. पूर्वी राजस्थान
19. पश्चिम मध्य प्रदेश
20. पूर्वी मध्य प्रदेश
21. गुजरात
22. सौराष्ट्र
23. कोंकण और गोवा
24. मध्य महाराष्ट्र
25. मराठवाड़ा
26. विदर्भ
27. छत्तीसगढ़
28. तटीय आंध्र प्रदेश और यनम
29. तेलंगाना
30. रायलसीमा
31. तमिलनाडु, पुडुचेरी और कराईकल
32. तटीय कर्नाटक
33. आंतरिक उत्तरी कर्नाटक
34. आंतरिक दक्षिणी कर्नाटक
35. केरल और माहे
36. लक्षद्वीप



1. Andaman & Nicobar Islands
2. Arunachal Pradesh
3. Assam & Meghalaya
4. Nagaland, Manipur, Mizoram & Tripura
5. Sub-Himalayan West Bengal & Sikkim
6. Gangetic West Bengal
7. Odisha
8. Jharkhand
9. Bihar
10. East Uttar Pradesh
11. West Uttar Pradesh
12. Uttarakhand
13. Haryana, Chandigarh & Delhi
14. Punjab
15. Himachal Pradesh
16. Jammu & Kashmir and Ladakh
17. West Rajasthan
18. East Rajasthan
19. West Madhya Pradesh
20. East Madhya Pradesh
21. Gujarat
22. Saurashtra
23. Konkan & Goa
24. Madhya Maharashtra
25. Marathwada
26. Vidarbha
27. Chhattisgarh
28. Coastal Andhra Pradesh & Yanam
29. Telangana
30. Rayalaseema
31. Tamilnadu, Puducherry & Karaikal
32. Coastal Karnataka
33. North Interior Karnataka
34. South Interior Karnataka
35. Kerala & Mahe
36. Lakshadweep

SPATIAL DISTRIBUTION (% of Stations reporting)

% Stations	Category	% Stations	Category
76-100	Widespread (WS/Most Places)	26-50	Scattered (SCT/A Few Places)
51-75	Fairly Widespread (FWS/Many Places)	1-25	Isolated (ISOL)



Fog



Heavy Snow



Cold Wave



Heavy Rain



Dust Storm



Cold Day



Very Heavy Rain



Heat Wave



Ground Frost



Extremely Heavy Rain



Warm Night



Thunder & Lightning



Hot Day



Hailstorm



Hot & Humid



Dust Raising Winds



Strong Surface Winds

COLOUR CODED WARNING

No Warning (No Action)

Watch (Be Aware)

Alert (Be Prepared To Take Action)

Warning (Take Action)

Probabilistic Forecast

Terms	Probability of Occurrence (%)
Unlikely	< 25
Likely	25 - 50
Very Likely	50 - 75
Most Likely	> 75

* Red colour warning does not mean "Red Alert", Red colour warning means "Take Action".
Forecast and Warning for any day is valid from 0830 hours IST of day till 0830 hours IST of next day.
For more details, kindly visit <https://mausam.imd.gov.in> or contact: 011-2434-4599
(Service to the Nation since 1875)

DEFINITION/CRITERIA

Rain/ Snow *

Heavy: 64.5 to 115.5 mm/cm *
Very Heavy: 115.6 to 204.4 mm/cm *
Extremely Heavy: > 204.4 mm/cm *

Heat Wave

When maximum temperature of a station reaches $\geq 40^{\circ}\text{C}$ for plains and $\geq 30^{\circ}\text{C}$ for hilly regions
(a) Based on Departure from normal

Heat Wave: Maximum Temperature Departure from normal 4.5°C to 6.4°C .

Severe Heat Wave: Maximum Temperature Departure from normal $\geq 6.5^{\circ}\text{C}$

(b). Based on Actual maximum temperature

Heat Wave: When actual maximum temperature $\geq 45^{\circ}\text{C}$.

Severe Heat Wave: When actual maximum temperature $\geq 47^{\circ}\text{C}$

(c). Criteria for heat wave for coastal stations

When maximum temperature departure is $> 4.5^{\circ}\text{C}$ from normal. Heat Wave may be described provided maximum temperature $\geq 37^{\circ}\text{C}$

Warm Night

When maximum temperature remains 40°C

Warm Night: When minimum temperature departure 4.5°C to 6.4°C .

Severe Warm Night: When minimum temperature departure $> 6.4^{\circ}\text{C}$.

Cold Wave

When minimum temperature of a station $\leq 10^{\circ}\text{C}$ for plains and $\leq 0^{\circ}\text{C}$ for hilly regions.
(a). Based on departure

Cold Wave: Minimum Temperature Departure from normal -4.5°C to -6.4°C .

Severe Cold Wave: Minimum Temperature Departure from normal $\leq -6.5^{\circ}\text{C}$

(b) Based on actual Minimum Temperature (for Plains only)

Cold Wave : When Minimum Temperature is $\leq 4.0^{\circ}\text{C}$

Severe Cold Wave: When Minimum Temperature is $\leq 2.0^{\circ}\text{C}$

(c) For Coastal Stations

When Minimum Temperature departure is $\leq -4.5^{\circ}\text{C}$ & actual Minimum Temperature is $\leq 15^{\circ}\text{C}$

Cold Day

When minimum temperature of a station $\leq 10^{\circ}\text{C}$ for plains and $\leq 0^{\circ}\text{C}$ for hilly regions
Based on departure

Cold Day: Maximum Temperature Departure from normal -4.5°C to -6.4°C .

Severe Cold Day: Maximum Temperature Departure from normal $\leq -6.5^{\circ}\text{C}$

Fog

Phenomenon of small droplets suspended in air and the horizontal visibility $< 1\text{km}$

Moderate Fog: When the visibility between 500-200 metres

Dense Fog: when the visibility between 50- 200 metres

Very Dense Fog: when the visibility < 50 metres

Thunderstorm

Sudden electrical discharges manifested by a flash of light (Lightning) and a sharp rumbling sound (thunder)

Dust/Sand Storm

An ensemble of particles of dust or sand energetically lifted to great heights by a strong and turbulent wind.

Frost

Ice deposits on ground

Air temperature $\leq 4^{\circ}\text{C}$ (over Plains)

Squall

A strong wind that rises suddenly, lasts for atleast 1 minute.

Moderate: Wind speed 52-61 kmph

Severe: Wind speed 62-87 kmph

Very Severe: Wind speed > 87 kmph

Sea State

Effect of various waves in the sea over specific area

Rough to very rough: Wind speed 41-62 kmph (22-33 knots) & Wave height 2.5-6 metre

High to very high: Wind speed 63-117 kmph (34-63 knots) & Wave height 6-14 metre

Phenomenal: Wind speed > 117 kmph (> 63 knots) & Wave height > 14 metre

Cyclone

Cyclonic Storm: Wind speed 62-87 kmph (34-47 knots)

Severe Cyclonic Storm: Wind speed 88-117 kmph (48-63 knots)

Very Severe Cyclonic Storm: Wind speed 118-165 kmph (64 - 89 knots)

Extremely Severe Cyclonic Storm: Wind speed 166-220 kmph (90 -119 knots)

Super Cyclone Strom: Wind speed > 220 kmph (> 119 knots)

* Red colour warning does not mean "Red Alert", Red colour warning means "Take Action".
Forecast and Warning for any day is valid from 0830 hours IST of day till 0830 hours IST of next day.
For more details, kindly visit <https://mausam.imd.gov.in> or contact: 011-2434-4599
(Service to the Nation since 1875)

Hot and Humid: When maximum temperatures remain 3°C above normal along with the above normal relative humidity.